

Response

Use this form to make your response. If you can't bring it back on the gift day, bring it another week, or complete online:

www.sjbchurch.co.uk/giving-response

We encourage you to prayerfully consider the following:

- I will begin to give a regular gift of
.....
- I will increase my regular gift by
.....
- I will give a one off gift of
.....
- I would like someone to send me more information (please tick)

We recognise that alongside money there are other things we can give to the church, so please use the section below to let us know what you can offer.

- I can offer the following skills to the church
- I would like to serve on a team (list below or tick to find out more)

Name.....

Email.....

This form simply lets us know how you are going to respond, you will need to take the appropriate action to enable your gift.

If you are currently facing financial hardship, please do let us know so we can pray for you and help to support you financially.

Ways to Give

There are many ways that you can give, we have summarised them below, and you can find all the information at:

www.sjbchurch.co.uk/giving

Standing Order

The most efficient way for you to give to us is directly via the bank through standing order, as there are no fees involved, and we get 100% of your donation. The bank details are below:

ST JOHNS CHURCH
Account Number: 71544224
Sort Code: 54-21-50
Bank: NatWest

Please quote the reference as 'General Giving'.

Parish Giving Scheme

This method is also efficient as we do not incur any fees. You can sign up to a direct debit taken around the first of the month, either by using the packs in Church or going to: www.parishgiving.org.uk/donors/find-your-parish/clarendon-park-st-john-leicester/

Online

By debit/credit card at www.sjbchurch.co.uk/giving.

Cash/Cheque/Contactless

Give via these methods on the way out of Church on Sundays.

Gift Aid

If you are a UK tax payer we are able to claim an extra 25% on top of what you give, from the HMRC. We are able to back date claims up to 4 years. If you are able to do this please fill out the form on the giving page of our website. If you are not sure whether this applies to you please contact: hello@sjbchurch.co.uk



**ST JOHN
THE BAPTIST
CHURCH**
LEICESTER

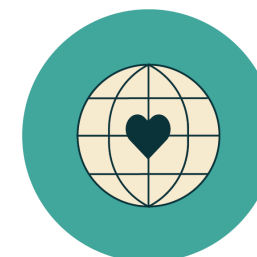


Giving to St John's

Autumn 2022

We are extended family on mission where **everybody belongs, and everybody contributes**. Part of your contribution to the life of St John's is financial giving.

- Make Disciples**
- Transform Community**
- Plant Churches**



www.sjbchurch.co.uk
hello@sjbchurch.co.uk

Introduction

In recent weeks, I have shared something of the financial challenges we are facing right now as a church. I want to give you a fuller update and share with you how I think we need to respond.

The answer to our financial challenge will be a move of the Spirit. In our weakness, we need to seek God in prayer and fasting, seeking his will, asking him to provide. I am praying daily for God to send workers into his harvest field as we seek to rebuild our teams and that God will provide £25K of new money over the next 12 months. This is what we believe we need to get back on track.

25K is a stretch but isn't as much as you might think – it equates to approx. 25 per month per regular giver. With some new givers, this would decrease.

I am inviting us all to join me in praying. And more than that, as we seek him, to be ready to be the answer to our own prayers.

So I encourage you to join me by:

- Praying the below prayer daily over the next 7 days.
- Reading the blog we have published on this
- Fasting from Wed night through Thurs evening and break fast together at Re-Group
- Consider how you might be the answer to our prayers in terms of offering one off gifts or increasing/starting regular giving
- Coming to our Gift Day service on 2 Oct ready to give

We know that these are hard times financially for all of us, and this is true for the church too. In all of this we are not wanting to create pressure or burden you but I want to ask us to ponder this and come back a week later ready to bring our offerings and gifts. This might be one off gifts or pledges to begin or increase regular giving. We rely on both to function as a church.

These are extraordinary times, and this is an extraordinary call to pray, fast and give.

Sami Lindsey

Generosity Prayer

Lord as you taught us to pray...

'Your kingdom come; your will be done on earth as in heaven'.

We pray this over our city, our community, our friends, our neighbours, our work colleagues, and our families, and those who are in need.

Lord as you taught us to pray...,

we ask You for people to serve our community and church and hear your call to proclaim the Good News.

We come to you in our need, and ask that you open the storehouse of heaven and provide what we need individually and as a church.

Lord as you taught us to pray...,

Fill us again with the Holy Spirit, and make us ready us to be the answer to our own prayers.

Out of Your love for us help us show generosity and love to others.

We offer our time, money and talents and our whole selves to you now.

Amen

Principle of Giving

Giving is part of our worship. Jesus was very clear that it's not possible to serve both God and money. We must make sure that God is on the throne of our hearts, not money. One temperature test for this is our attitude towards giving and how willing we are to be generous. Our motivation for generosity is God's goodness to us. We give in response to God's radically generosity to us in giving us his son. The only response to God's radical generosity is radical generosity ourselves.

The Old Testament teaches the practice of tithing, that we give as an expression of thankfulness 10% from the first fruits of what we receive. Giving 10% of our income is a good principle to guide our giving. The Bible teaches that giving should be faithful, regular, cheerful, willing, joyful and at times, sacrificial. Sometimes we need to feel the pain of sacrificial giving, we may need to ask what are we giving to before God? But also, there should not be guilt or shame associated with giving – it is never helpful to compare what we give, with what others give.

Our Situation

Over the last year our regular giving has been significantly under what we had budgeted. This has led us currently to have a £6k deficit, up to the end of August. We have taken measures to reduce expenditure however these are limited without us seriously affecting our ability to be the church and run our core ministries. We are currently projecting around a £10k deficit for the end of this year. We can not end the year with this deficit.

The PCC take very seriously the need to exercise robust financial management, and we assure you that your gift will be used in the most effective and efficient way possible